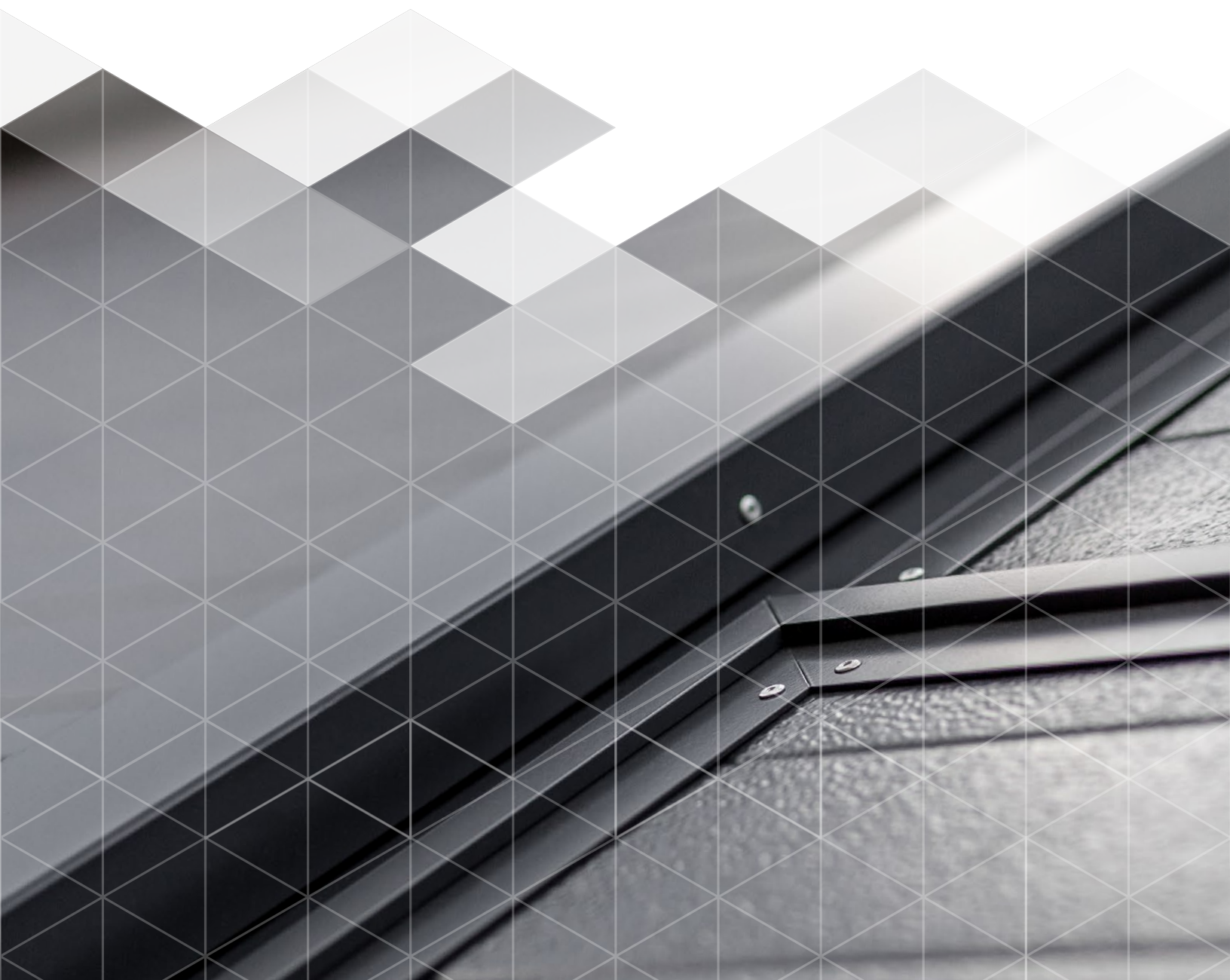




Catálogo de Accesorios y Molduras | Accesories and Trims Catalog



Tornillería y Fijación - Fasteners and Fixing

Tornillería FM - FM Screws and Fasteners

Tornillos Bimetalicos Autotaladrantes de Acero Inoxidable | Stainless Steel Bi-Metal Self Drilling Screw

Grado 304 - Grade 304 (JT3-D-6H-5.5/6.3 x 87 - E16)



Grado 304 - Grade 304 (JT3-D-6H-5.5/6.3 x 107 - E16)



Grado 304 - Grade 304 (JT3-D-6H-5.5/6.3 x 127 - E16)



Grado 304 - Grade 304 (JT3-D-6H-5.5/6.3 x 147 - E16)



Grado 304 - Grade 304 (JT3-D-6H-5.5/6.3 x 197 - E16)



Grado 304 - Grade 304 (JT3-D-6H-5.5/6.3 x 237 - E16)



Grado 304 - Grade 304 (JT3-D-6H-5.5/6.3 x 267 - E16)



Grado 304 - Grade 304 (JT3-2H 4.8 x 19 - E16)



Grado 304 - Grade 304 (JT3-6-5.5x50 - E16)



Pija - Screw-in Pin # 8x½ K-LATHE S/A



Tornillería Estandar - Standard Screws and Fasteners

Pija Autotaladrante | Self Drilling Screw

MA # 14X1" S/A



MA # 14X1-1/4" S/A



MA # 14X1-1/2" S/A



MA # 14X 2" S/A



MA # 14X 2 1/2" S/A



MA # 14X 3" S/A



MA # 14X 4" S/A



MA # 14X 5" S/A



MA # 14X 6" S/A



MA # 14X 8" S/A



MA # 14X 10" S/A



Arandela galvanizada - Galvanized Washing Ring #14X15



Otros Tornillos | Other Fasteners and Screws

Varilla Roscada Galvaniada de ¾"

¾" Galvanized Threaded Rod

Tuerca Cople Galvanizada de ¾"

¾" Galvanized Coupling Nut



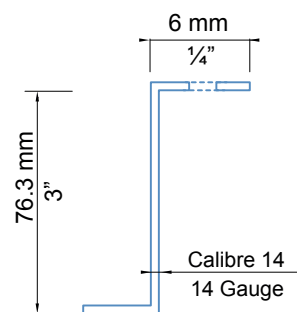
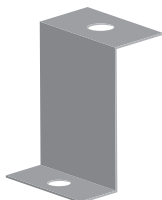
Tornillo Cabeza Coche Galvanizado de ¾"

¾" Carriage Bolt

Complementos - Installation Complements

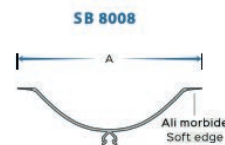
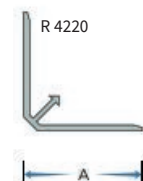
Liner Clip - Clip de fijación tipo "z"

Description	Descripción	Especificación	Especificación
3" fixing clip	Clip de fijación 3"	Gauge 14	Calibre 14



Sanitary Profiles - Perfiles Sanitarios

Description	Descripción	Código / Code	Tamaño / size	RAL 9002 - 9010
PVC Retaining Profile	Perfil de Sujeción en PVC	R 4220	40 mm / 1 9/16"	
PVC Sanitary Cove	Curva Sanitaria en PVC	SB 8008	100 mm / 4"	



Cove Joints Intersections - Nodos

Description	Descripción	Código / Code	RAL 9002 - 9010
PVC Cove Joins	Nodos de PVC	NPR 010	
PVC Cove Joins	Nodos de PVC	NPR 020	
PVC Cove Joins	Nodos de PVC	NPR 030	
PVC Cove Joins	Nodos de PVC	NPR 040	
PVC Cove Joins	Nodos de PVC	NPR 050	

NPR 050



NPR 010



NPR 020



NPR 030



NPR 040



Complementos - Installation Complements

Sanitary Coved Base - Zócalo

Description	Descripción	Código / Code	Tamaño / size	RAL 9002 - 9010
PVC Sanitary Coved Base	Zócalo PVC	SB8051	40 mm - 10 Ft	
PVC Accessory	Accesorio PVC	NPR 001		
PVC Accessory	Accesorio PVC	NPR 002		
PVC Accessory	Accesorio PVC	NPR 003		
PVC Accessory	Accesorio PVC	NPR 004		
PVC Accessory	Accesorio PVC	NPR 005		
PVC Accessory	Accesorio PVC	NPR 006		

NPR 001



NPR 002



NPR 003



NPR 004



NPR 005



NPR 006



Offset U-Channels - Canales U Asimétricos

Description	Descripción	Código / Code	Tamaño / size	Linear working length 10 ft - Long. de trabajo 3 m lineales
U-Channel	Canal U	EX68	50 mm - 2"	
U-Channel	Canal U	EX94	63 mm - 2.5"	
U-Channel	Canal U	EX67	100 mm - 4"	

EX68



EX94

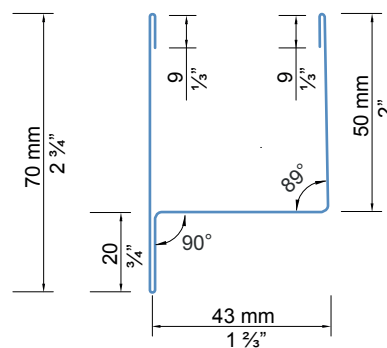
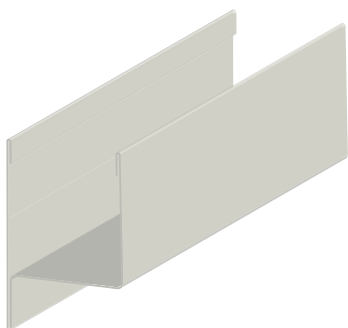


EX67



Door casing - Moldura para puerta

Description	Descripción	Linear working length 10 ft - Long. de trabajo 3.05 m lineales
Fiberglass Polyester finish	Fibra de vidrio Acabado poliéster	



Complementos - Installation Complements

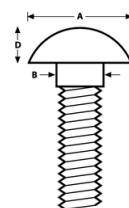
Threaded Rod - Varilla Roscada

Código / Code	Description	Descripción
TR-M8	Max. Load= 110 lbs Length= 3.2 ft Material: Nylon 66	Carga Máxima: 50 kg Longitud: 1000 mm Material: Nylon 66
TR-M10	Max. Load= 176 lbs Length= 3.2 ft Material: Nylon 66	Carga Máxima: 80 kg Longitud: 1000 mm Material: Nylon 66



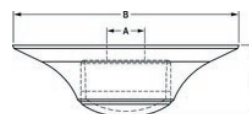
Nylon Panel Screw - Tornillo de Nylon para Panel

Código / Code	Description	Descripción
BBNPLM10x150N	Nylon Screw Model 3/8 x 6 in	Tornillo de Nylon Modelo 10 x 150 mm
BBNPLM12x150N	Nylon Screw Model 1/2 x 6 in	Tornillo de Nylon Modelo 12 x 150 mm



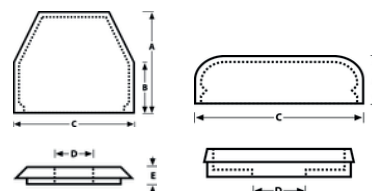
Insulation Disc and Cap - Disco de Aislamiento y Tapa

Código / Code	Description	Descripción
Insuldisc M8	Nylon Disc Max. Load: 440 lbs	Disco de Nylon Carga Máxima: 200 kg
Insuldisc M10	Nylon Disc Max. Load: 606 lbs	Disco de Nylon Carga Máxima: 275 kg



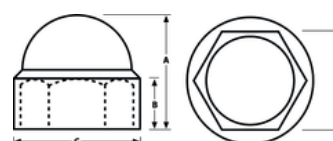
Cap and Washer - Tapa y Arandela

Código / Code	Description	Descripción
CW-CAPM6	Polypropylene Cap	Tapa de Polipropileno



Bolt and Nut Covers - Tapa de protección para Tuerca y Tornillo

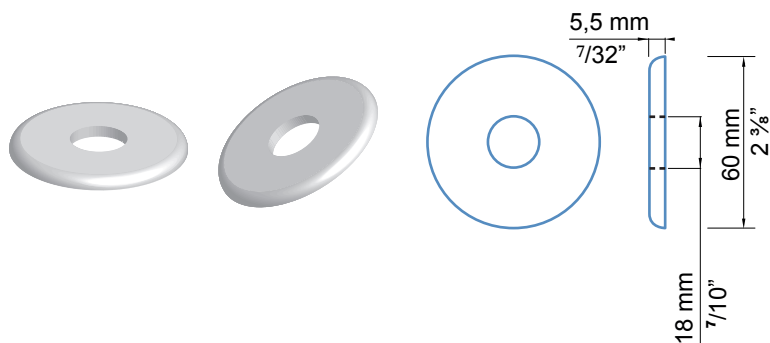
Código / Code	Description	Descripción
PC-M10W	19.5 x 9 x 21.3 x 17	3/4 x 3/8 x 7/8 x 2/3



Complementos - Installation Complements

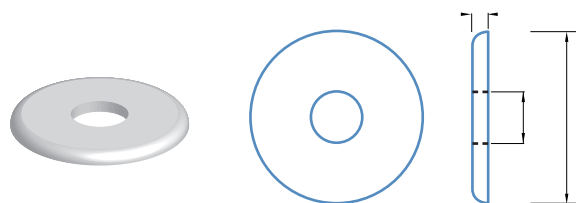
2 3/8" Washer - Arandela de 60mm

Description	Descripción
For TEC 164 and TEC 166	Para TEC 164 y TEC 166



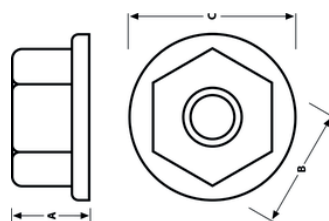
Flat Washer - Rondana para Distribución de Carga

Código / Code	Description	Descripción
WN-M8 STD	Nylon 1/3" x 1 3/4" x 3/16"	Nylon 8.5 mm x 45 mm x 4.5 mm
WN-M10 STD	Nylon 7/16" x 1 3/4" x 3/16"	Nylon 11.5 mm x 45 mm x 4.5 mm



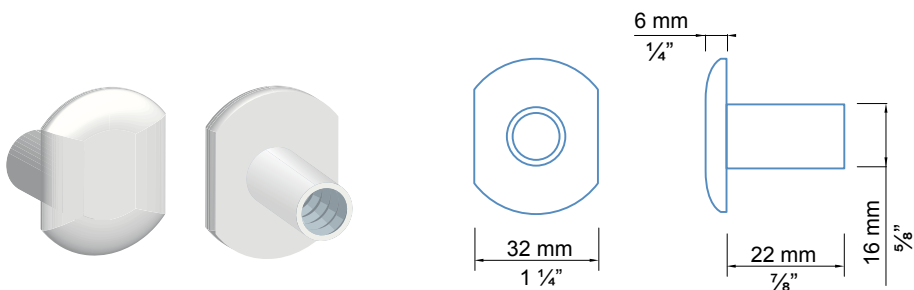
Hex Flange Nut - Tuerca Hexagonal con Arandela Integrada

Código / Code	Description	Descripción
WF-M10N	Nylon 3/8" x 2 3/8" x 7/8"	Nylon 10 mm x 16.7 mm x 22 mm



M10 Bolt - Bulon M10

Description	Descripción
Galvanized M10 clamp	Orquilla M10 galvanizada



Complementos - Installation Complements

Capelloti Isocop - Isocop fastening clip



Para Panel Isocop - For Isocop Panel

Code - Código	Material
	Acero Galvanizado - Galvanized Steel
	Acero RAL 9010 / 9002 - RAL Color 9010 / 9002 Steel
51000010	Terracota

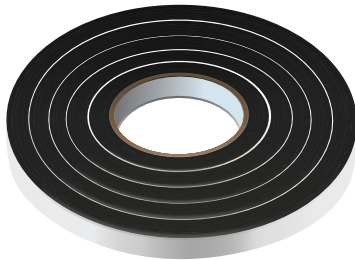
Soporte metálico para panel Isoparete - Metal panel support for Isoparete



Code - Código	Dimensiones - Dimensions	Material
510000310	80 x 24 x 2 mm 3" x 1" x 5/64 mm	Acero Galvanizado Galvanized Steel
5100003104	80 x 24 x 2 mm (2 barrenos) 3" x 1" x 5/64 mm (2 drill bits)	Acero Galvanizado Galvanized Steel

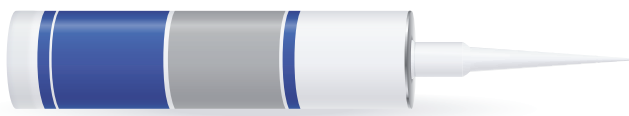
- Diseñado para isoparete plissé. Diámetro de barreno 7mm
- Designed for striated isoparete. Drill hole diameter 1/4"

Cinta de butilo - Butyl tape



Code - Código	Dimensiones - Dimensions
12420000	6 x 10 mm - 1/4" x 3/8"
PROPIEDADES / Properties	
Densidad / Density: lb/ft ³ (kg/m ³)	9 (144)
Adhesión / Adhesion: peel 90°, oz/in (N/cm)	37.0 (405)
Resistencia a la tensión / Tensile strength: psi (kPa)	40 (276)
Elongación de la espuma / Foam elongation	100%
Dureza / Hardness: 00	28
Abosrcion al agua/ Water absorption: %	2.5
Fuerza para comprimir / Compressive strength: 30% PSI (kPa)	3.5 (24)
Defelxión al comprimir / Compressive deflection: PSI (kPa)	2.0 (14)
Compresión al fijarse / Compression on setting: %	8
Temperatura de aplicación / Application temperature	4 °C a 52 °C (40 °F a 125 °F)
Temperatura de trabajo / Working temperature	-26 °C a 71 °C (-15 °F a 160 °F)

Sellador de silicon - Silicone sealant



Code - Código	Dimensiones - Dimensions
SIG000000	300ml
PROPIEDADES / Properties	
Base Química / Chemical base	New formulation of polyurethane
Apariencia / Aspect	Pasta / Paste
Densidad / Density	1.3 gr/ml - 173.1 oz/Gal
Tiempo sin tensión / Tack-free time	90 min
Proporción de curado / Curing ratio	3 mm/día - 0.1 in / day
Temperatura de Aplicación / Application temperature	+5° C to +40°C - 41°F a 104°F
Temperatura de trabajo / Service temperature	-30°C to +80°C -22°F to 176°F
Dureza / Hardness	Shore A 30
Resistencia de Tracción / Tensile strength	0,72 N/mm ² 104.4 Lb/in ²
Elongación / Elongation	>500%
Capacidad de movimiento / Movement capacity	50 %
VOC	0.0000019 g/l

Complementos - Installation Complements

Closure Isocop



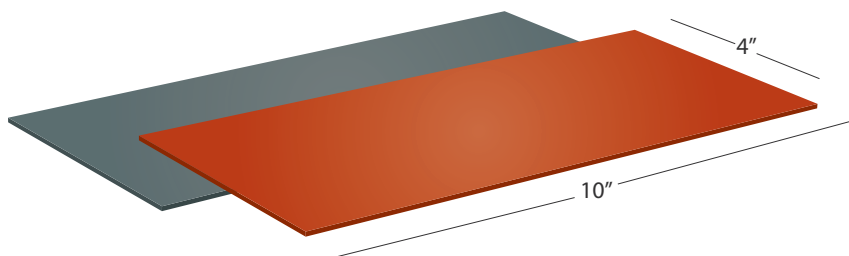
Code - Código	Tipo - Type	Uso - Application
5100009118	4 crestas 4 rows	Acero Galvanizado Galvanized Steel
Linear working lenght 3ft - Long. de trabajo 1 m		

Láminas lisas (Color Estandar) - Plain sheets (Standard colors)



Color	Dimensiones - Dimensions	Material
9010 / 9002	4" x 10" (50 pzas) calibre 24 y 26 4" x 10" (50 pcs) gauge 24 y 26	Acero - Steel

Láminas Lisas (Color Especial) - Plain sheets (Special colors)

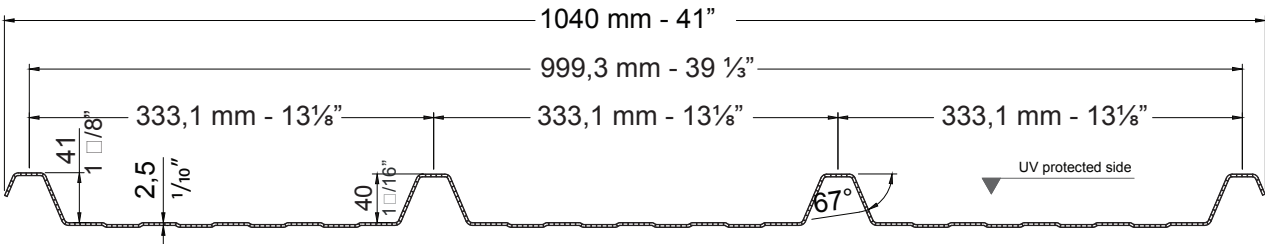
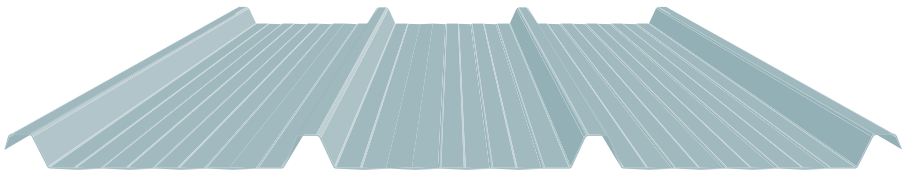


Color	Dimensiones - Dimensions	Material
*Color Especial - Special Color	4" x 10" (50pzas) gauge 24 y 26 4" x 10" (50 pcs) gauge 24 y 26	Acero - Steel

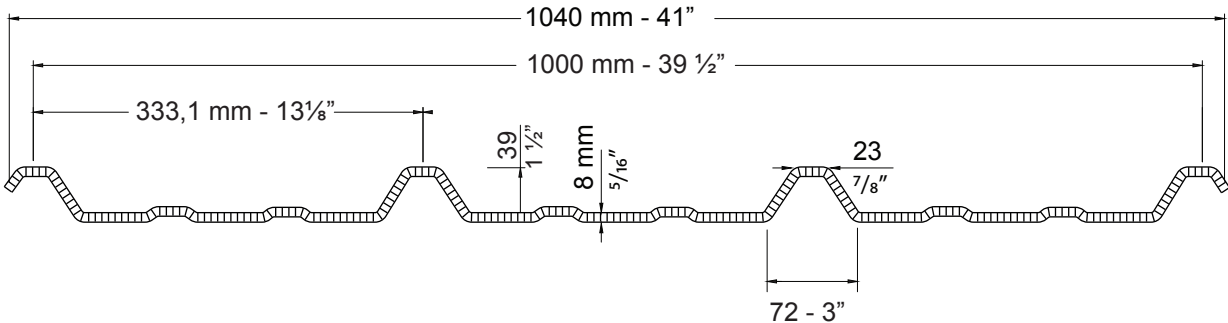
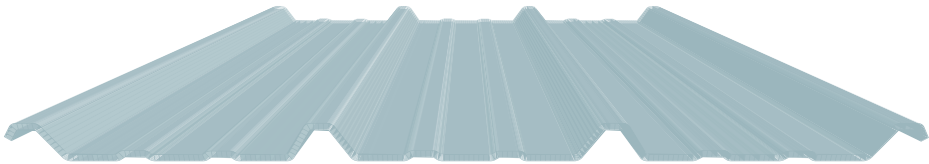
*A reserva de disponibilidad de acero
*Subject to steel availability

Complementos - Installation Complements

Isolite 40/2.5

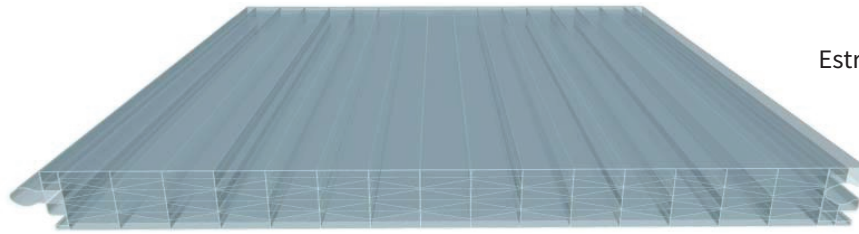


Isolite 40/8

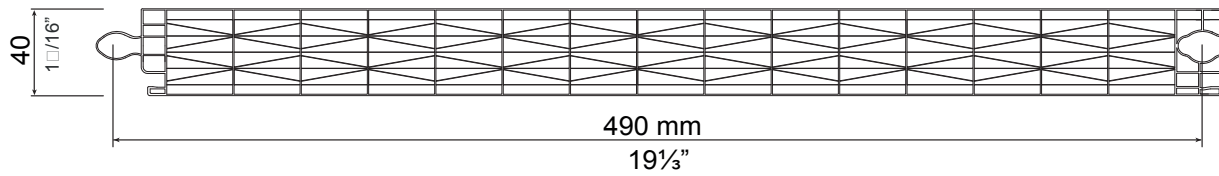


Complementos - Installation Complements

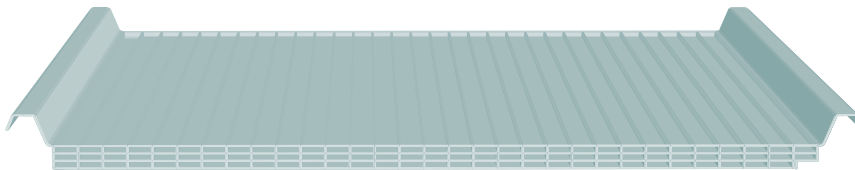
Isolite Wall 40/10



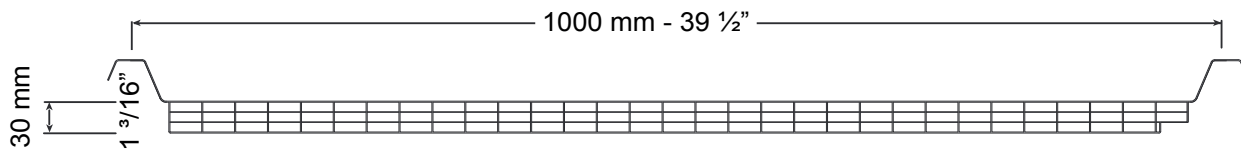
Estructura: 11 paredes por celda 40 mm
11 partitions per cell 1 1/16"



Isolite lisa 30



Estructura: 4 paredes por celda
4 partitions per cell



Trims - Molduras

Channel wrap trim - Canal "U"

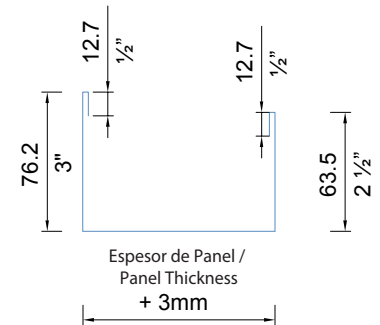
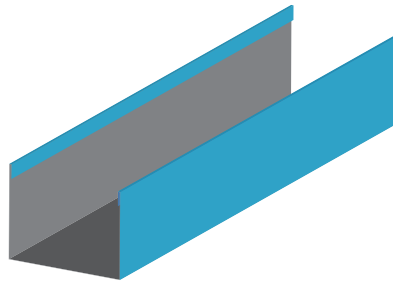
ISO L 0

External Pre-painting - Prepintado Externo

Panel thickness - Espesor del panel	Develop - Desarrollo
1"	8 1/8" - 206mm
1 1/4"	8 3/8" - 213mm
1 1/2"	8 5/8" - 219mm
1 5/8"	8 3/4" - 222mm
2"	9 1/8" - 232mm
2 1/2"	9 5/8" - 245mm
3"	10 1/8" - 257mm
4"	11 1/8" - 283mm
5"	12 1/8" - 308mm
6"	13 1/8" - 333mm
8"	15 1/8" - 384mm

Code - Código	Material
ISO L 0	Steel gauge 26 & 24 - Acero calibre 26 o 24

Linear working length 10 ft - Long. de trabajo 3.05 m lineales



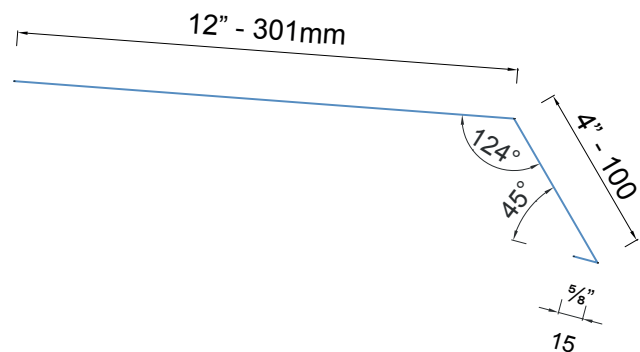
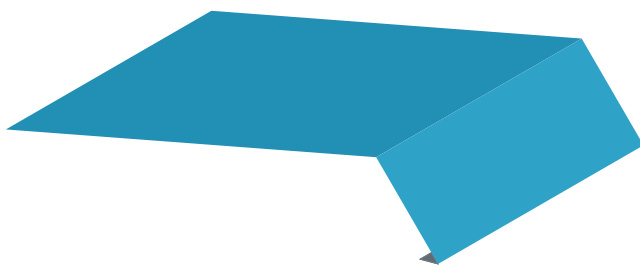
Drip edge profile - Perfil goterón para todos los tipos

ISO L 1a

External Pre-painting - Prepintado Externo

Develop - Desarrollo	Code - Código	Material
16 3/8" 416 inch mm	ISO L 1a	Steel gauge 26 & 24 - Acero calibre 26 o 24

Linear working length 10 ft - Long. de trabajo 3.05 m lineales



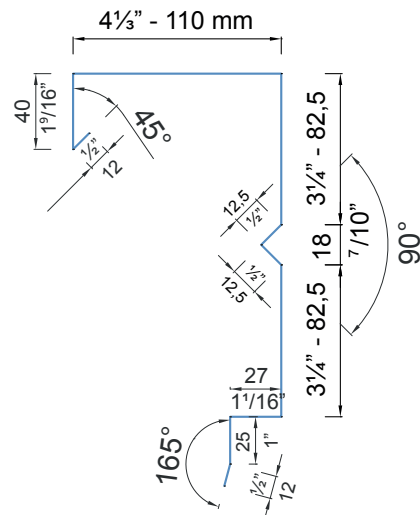
Trims - Molduras

ISO L 2a

External Pre-painting - Prepintado Externo

Develop - Desarrollo		Code - Código	Material
16%	416	ISO L 2a	Steel gauge 26 & 24 - Acero calibre 26 o 24
inch	mm		

Linear working lenght 10 ft - Long. de trabajo 3.05 m lineales



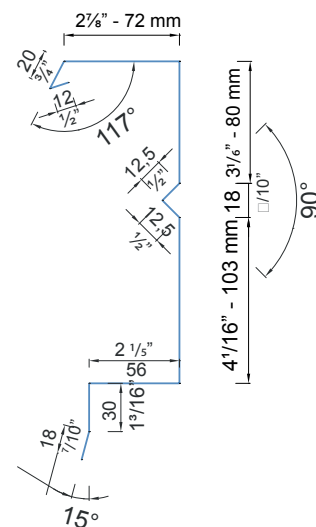
Protection trim for wall panel exterior joints - Moldura protectora para juntas exteriores de muro / techo

ISO L 2b

External Pre-painting - Prepintado Externo

Develop - Desarrollo		Code - Código	Material
16½"	416	ISO L 2b	Steel gauge 26 & 24 - Acero calibre 26 o 24
inch	mm		

Linear working length 10 ft - Long. de trabajo 3.05 m lineales



Trims - Molduras

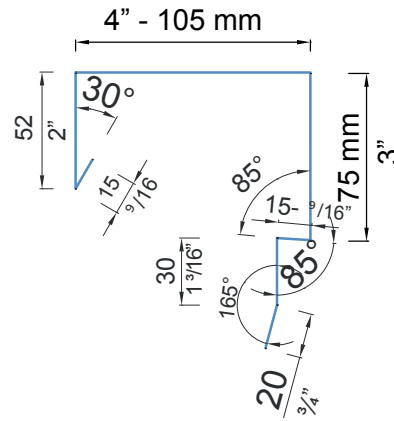
Protective coping for parapets - Moldura protectora para parapetos

ISO L 4

External Pre-painting - Prepintado Externo

Develop - Desarrollo		Code - Código	Material
12"	312	ISO L 4	Steel gauge 26 & 24 - Acero calibre 26 o 24
inch	mm		

Linear working length 10 ft - Long. de trabajo 3.05 m lineales



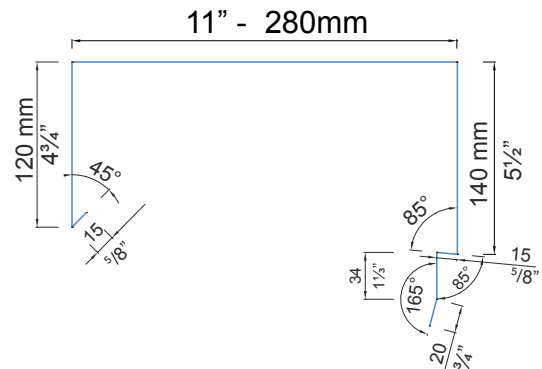
Parapet coping - Moldura protectora para parapetos

ISO L 5

External Pre-painting - Prepintado Externo

Development - Desarrollo		Code - Código	Material
25½"	624	ISO L 5	Steel gauge 26 & 24 - Acero calibre 26 o 24
inch	mm		

Linear working length 10 ft - Long. de trabajo 3.05 m lineales



Trims - Molduras

Angle trim for wall panel internal joint - Moldura angular para lado interno de juntas de panel de muro

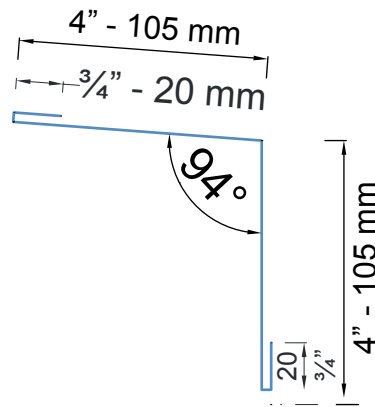
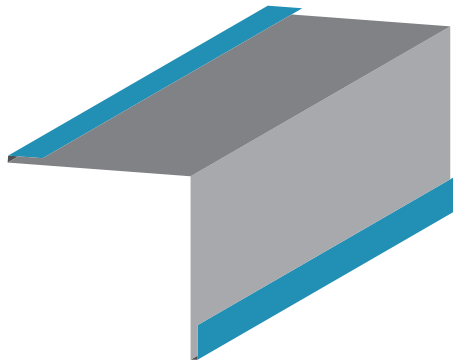
ISO L 6

External Pre-painting - Prepintado Externo

Develop - Desarrollo		Code - Código	Material
10"	250	ISO L 6	Steel gauge 26 & 24 - Acero calibre 26 o 24
inch	mm		

Linear working length 10 ft - Long. de trabajo 3.05 m lineales

Check with customer for bending angle - Consultar con cliente ángulo de doblez



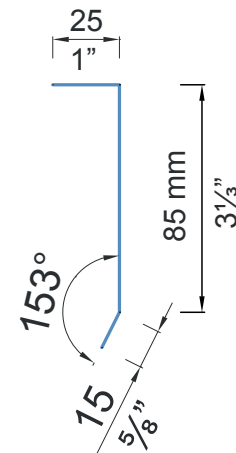
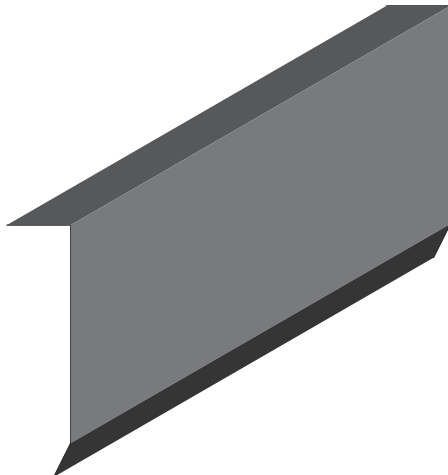
Outside corner trim - Esquinero externo

ISO L 7

External Pre-painting - Prepintado Externo

Develop - Desarrollo		Code - Código	Material
5"	125	ISO L 7	Steel gauge 26 & 24 - Acero calibre 26 o 24
inch	mm		

Linear working length 10 ft - Long. de trabajo 3.05 m lineales



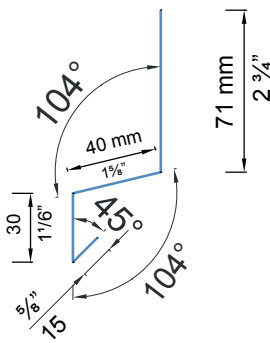
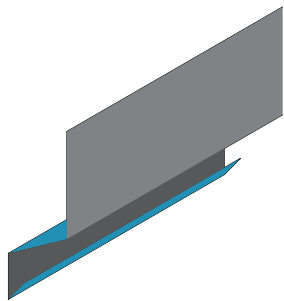
Wall Panel Base Trim - Remate para paneles de muro

ISO L 8

External Pre-painting - Prepintado Externo

Develop - Desarrollo		Code - Código	Material
6"	156	ISO L 8	Steel gauge 26 & 24 - Acero calibre 26 o 24
inch	mm		

Linear working length 10 ft - Long. de trabajo 3.05 m lineales



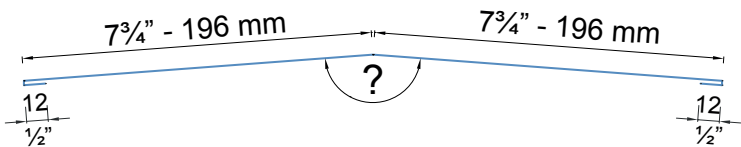
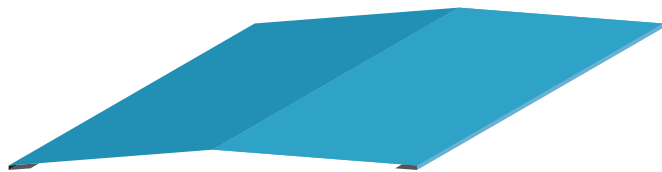
Simple ridge trim - Cumbra simple para todos los perfiles

ISO L 10 D

External Pre-painting - Prepintado Externo

Develop - Desarrollo		Code - Código	Material
16%	416	ISO L 10D	Steel gauge 26 & 24 - Acero calibre 26 o 24
inch	mm		

Linear working length 10 ft - Long. de trabajo 3.05 m lineales



Trims - Molduras

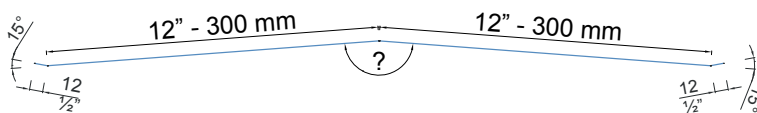
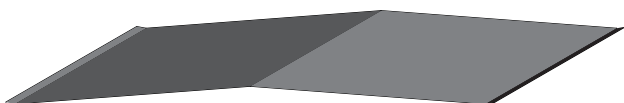
Simple sub-ridge trim - Subcumbra simple para todos los tipos

ISO L 11

External Pre-painting - Prepintado Externo

Develop - Desarrollo	Code - Código	Material
25" 624 inch mm	ISO L 11	Steel gauge 26 & 24 - Acero calibre 26 o 24

Linear working length 10 ft - Long. de trabajo 3.05 m lineales



Cover Trim - Cubierta para todos los perfiles

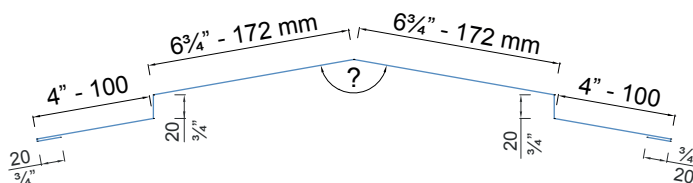
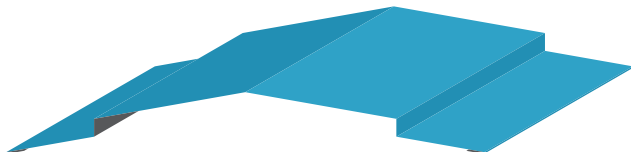
ISO L 12a

External Pre-painting - Prepintado Externo

Develop - Desarrollo	Code - Código	Material
25" 624 inch mm	ISO L 12a	Steel gauge 26 & 24 - Acero calibre 26 o 24

Linear working length 10 ft - Long. de trabajo 3.05 m lineales

- Specify overlap length - Especificar longitud de traslape
- No cut solution - Solución sin corte
- Important to combine trim with closure - Importante combinar moldura con closure
- Linear working length 120" - Long. de trabajo 3.05 m lineales

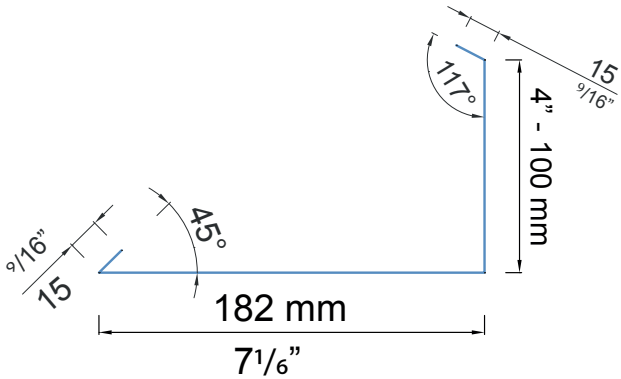


Cantilever roof edge trim - Moldura de borde para techos con cantiliver

ISO L 13

External Pre-painting - Prepintado Externo

Development - Desarrollo		Code - Código	Material	Linear working lenght 10 ft - Long. de trabajo 3.05 m lineales
12"	312	ISO L 13	Steel gauge 26 & 24 - Acero calibre 26 o 24	
inch	mm			

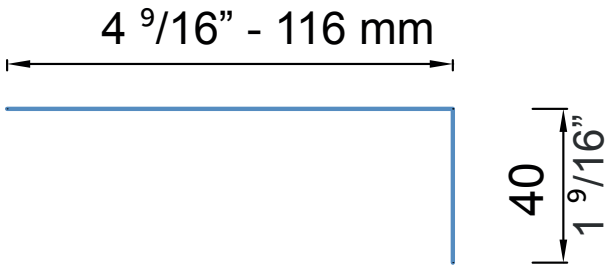
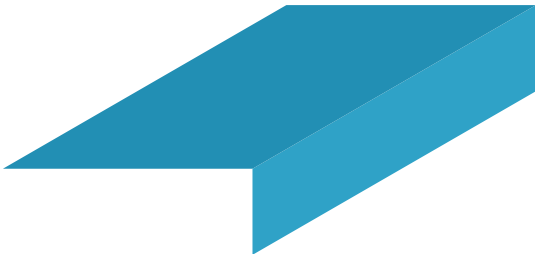


Corner trim for wall and roof panel internal joint - Moldura angular para lado interno de juntas de muro y techo

ISO L 14

External Pre-painting - Prepintado Externo

Develop - Desarrollo		Code - Código	Material	Linear working lenght 10 ft - Long. de trabajo 3.05 m lineales
6"	156	ISO L 14	Steel gauge 26 & 24 - Acero calibre 26 o 24	
inch	mm			



Trims - Molduras

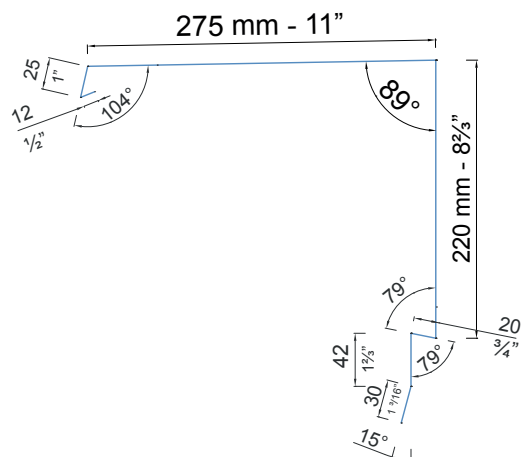
Exterior trim molding for wall and ceiling joints - Moldura protectora para juntas exteriores de muro y techo

ISO L 15

External Pre-painting - Prepintado Externo

Development - Desarrollo		Code - Código	Material
25"	624	ISO L 15	Steel gauge 26 & 24 - Acero calibre 26 o 24
inch	mm		

Linear working length 10 ft - Long. de trabajo 3.05 m lineales



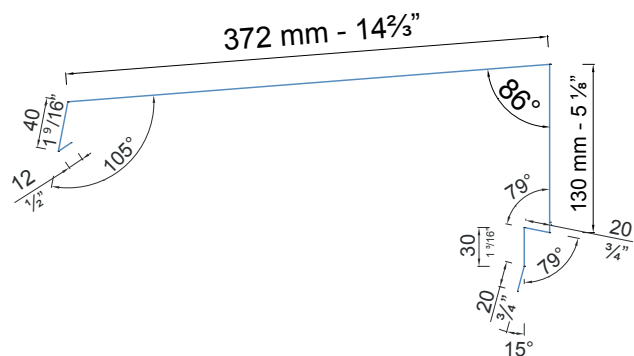
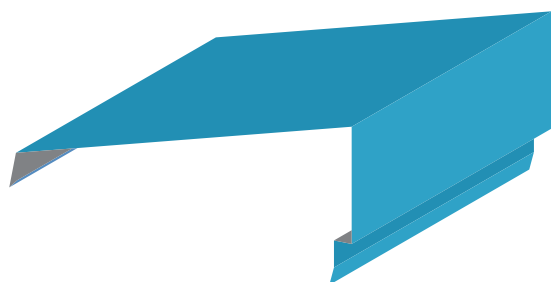
Exterior trim molding for wall and ceiling joints - Moldura protectora para juntas exteriores de muro y techo

ISO L 16

External Pre-painting - Prepintado Externo

Development - Desarrollo		Code - Código	Material
25"	624	ISO L 16	Steel gauge 26 & 24 - Acero calibre 26 o 24
inch	mm		

Linear working length 10 ft - Long. de trabajo 3.05 m lineales



Trims - Molduras

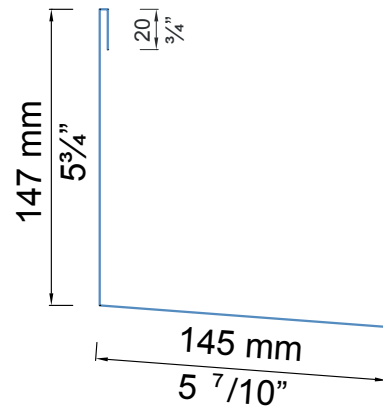
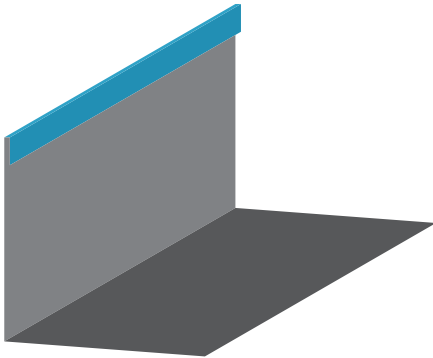
Corner trim for wall and roof panel internal joint - Moldura angular para lado interno de juntas de muro y techo

ISO L 18

External Pre-painting - Prepintado Externo

Develop - Desarrollo	Code - Código	Material
12 1/4" 312 inch mm	ISO L 18	Steel gauge 26 & 24 - Acero calibre 26 o 24

Linear working length 10 ft - Long. de trabajo 3.05 m lineales



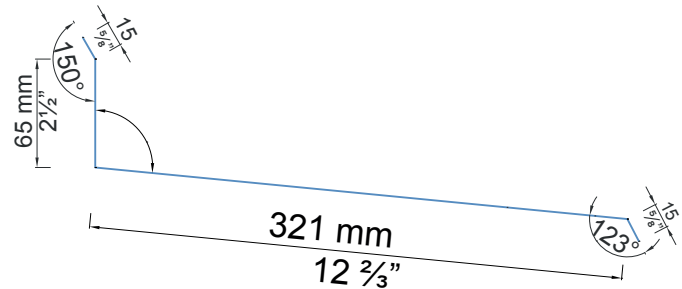
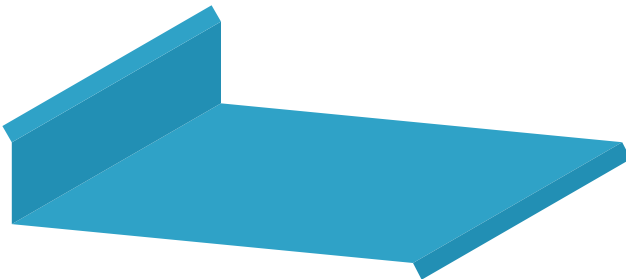
Angle trim for lower joints / Moldura angular para todas las juntas inferiores

ISO L 19

External Pre-painting - Prepintado Externo

Develop - Desarrollo	Code - Código	Material
16 3/8" 416 inch mm	ISO L 19	Steel gauge 26 & 24 - Acero calibre 26 o 24

Linear working length 10 ft - Long. de trabajo 3.05 m lineales
- Specify overlap length - Especificar longitud de traslape
- Linear working length 120" - Long. de trabajo 3.05 m lineales



Trims - Molduras

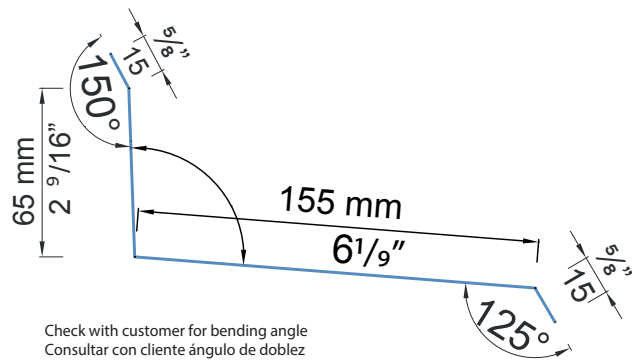
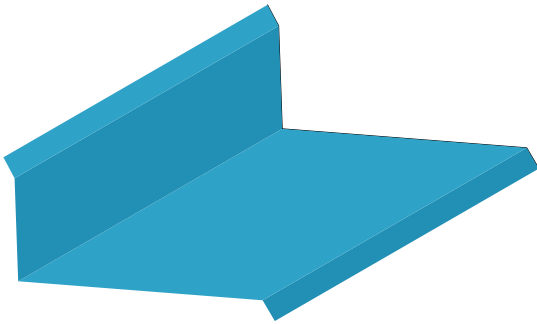
Bottom trim for lower joints - Moldura inferior para todas las juntas inferiores

ISO L 19 D

External Pre-painting - Pre-pintado Externo

Develop - Desarrollo		Code - Código	Material
10"	250	ISO L 19D	Steel gauge 26 & 24 - Acero calibre 26 o 24
inch	mm		

Linear working length 10 ft - Long. de trabajo 3.05 m lineales
 - Specify overlap length - Especificar longitud de traslape
 - Linear working length 120" - Long. de trabajo 3.05 m lineales



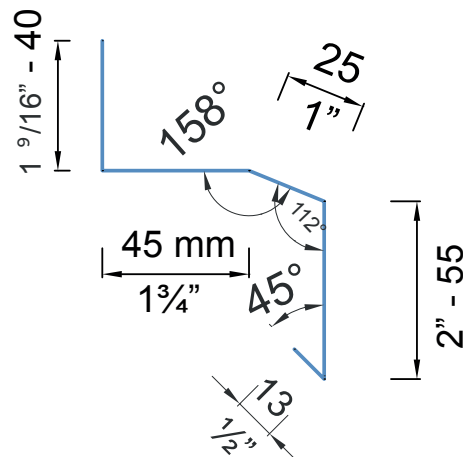
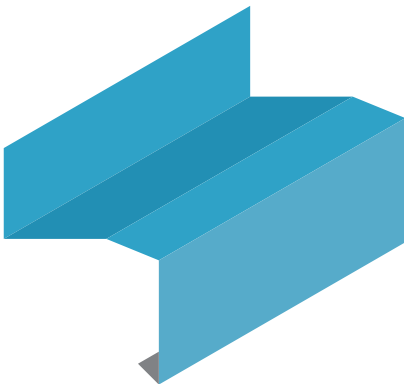
Horizontal drip edge trim for horizontal wall - Goterón horizontal para junta horizontal de muro

ISO L 20

External Pre-painting - Pre-pintado Externo

Develop - Desarrollo		Code - Código	Material
7"	178	ISO L 20	Steel gauge 26 & 24 - Acero calibre 26 o 24
inch	mm		

Linear working length 10 ft - Long. de trabajo 3.05 m lineales



Trims - Molduras

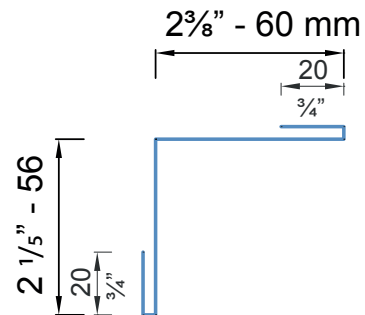
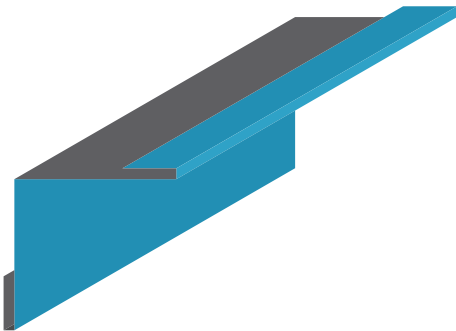
Corner trim for wall and roof panel internal joint - Moldura angular para lado interno de juntas de muro y techo

ISO L 22

External Pre-painting - Prepintado Externo

Develop - Desarrollo	Code - Código	Material
6 " 156 inch mm	ISO L 22	Steel gauge 26 & 24 - Acero calibre 26 o 24

Linear working length 10 ft - Long. de trabajo 3.05 m lineales



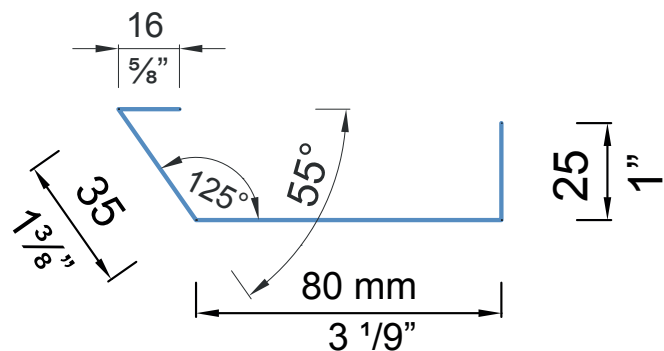
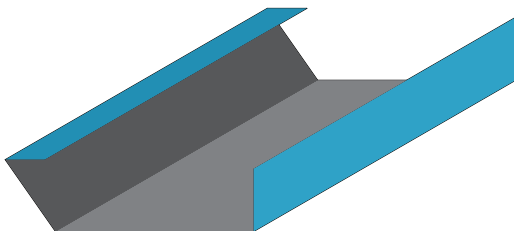
Cover trim for expansion joints - Moldura de tapa para juntas móviles

ISO L 23

External Pre-painting - Prepintado Externo

Develop - Desarrollo	Code - Código	Material
6 " 156 inch mm	ISO L 23	Steel gauge 26 & 24 - Acero calibre 26 o 24

Linear working length 10 ft - Long. de trabajo 3.05 m lineales



Trims - Molduras

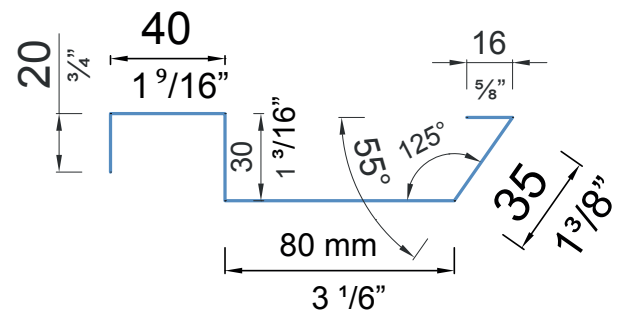
Cover trim for expansion joints - Moldura de tapa para juntas móviles

ISO L 24

External Pre-painting - Prepintado Externo

Develop - Desarrollo		Code - Código	Material
8 ½"	221	ISO L 24	Steel gauge 26 & 24 - Acero calibre 26 o 24
inch	mm		

Linear working lenght 10 ft - Long. de trabajo 3.05 m lineales



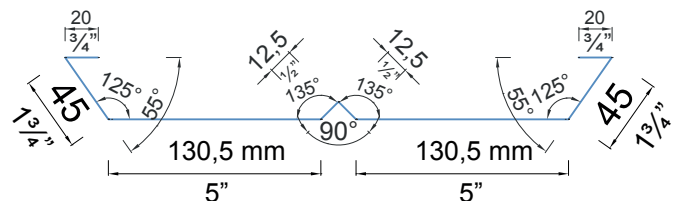
External cover trim for vertical joints - Moldura tapa externa para juntas verticales

ISO L 26b

External Pre-painting - Prepintado Externo

Develop - Desarrollo		Code - Código	Material
16 3/8"	416	ISO L 26b	Steel gauge 26 & 24 - Acero calibre 26 o 24
inch	mm		

Linear working lenght 10 ft - Long. de trabajo 3.05 m lineales



Trims - Molduras

External cover trim for vertical joints - Moldura tapa externa para juntas verticales

ISO L 27

External Pre-painting - Prepintado Externo

Develop - Desarrollo		Code - Código	Material
5"	125	ISO L 27	Steel gauge 26 & 24 - Acero calibre 26 o 24
inch	mm		

Linear working length 10 ft - Long. de trabajo 3.05 m lineales



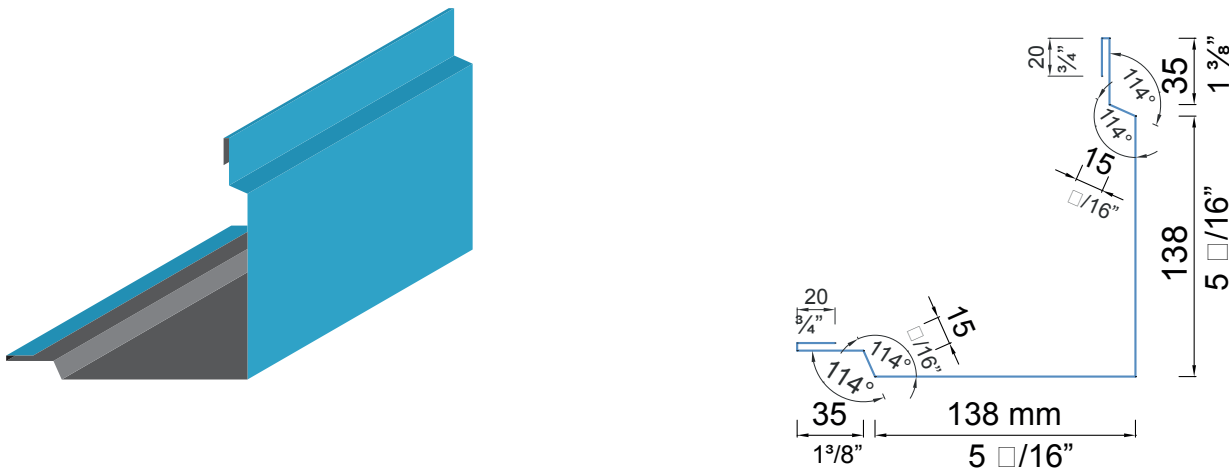
External cover trim for lower wall joint - Moldura tapa externa para junta inferior muro

ISO L 28

External Pre-painting - Prepintado Externo

Develop - Desarrollo		Code - Código	Material
16 1/8"	416	ISO L 28	Steel gauge 26 & 24 - Acero calibre 26 o 24
inch	mm		

Linear working length 10 ft - Long. de trabajo 3.05 m lineales



Trims - Molduras

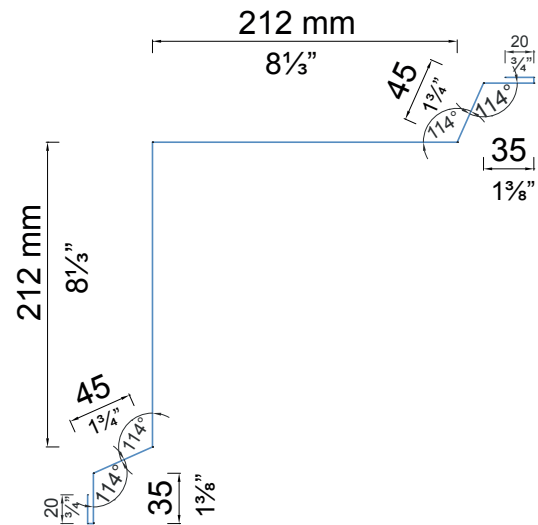
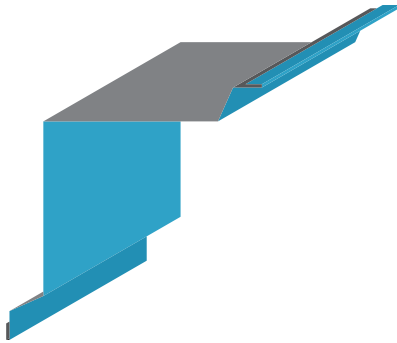
External cover trim for bottom wall joint (Inverted angle) - Moldura tapa externa para junta inferior muro (Angulo invertido)

ISO L 30

External Pre-painting - Prepintado Externo

Develop - Desarrollo		Code - Código	Material
24 1/2"	624	ISO L 30	Steel gauge 26 & 24 - Acero calibre 26 o 24
inch	mm		

Linear working length 10 ft - Long. de trabajo 3.05 m lineales



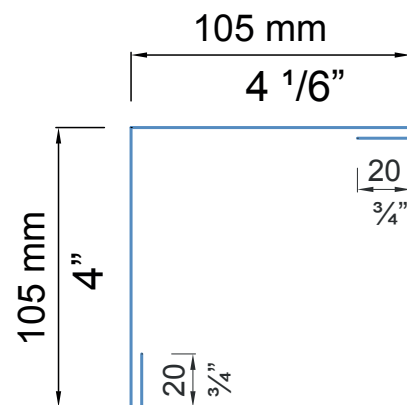
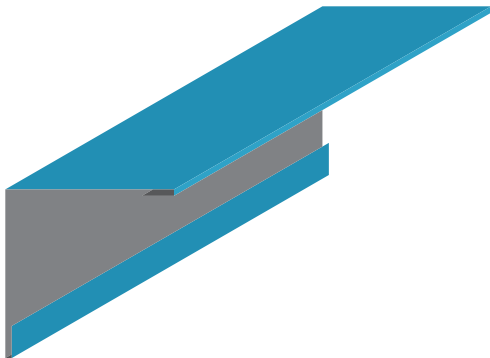
Internal trim cover for bottom wall joint - Moldura tapa interna para junta inferior muro

ISO L 32

External Pre-painting - Prepintado Externo

Develop - Desarrollo		Code - Código	Material
10"	250	ISO L 32	Steel gauge 26 & 24 - Acero calibre 26 o 24
inch	mm		

Linear working length 10 ft - Long. de trabajo 3.05 m lineales



Trims - Molduras

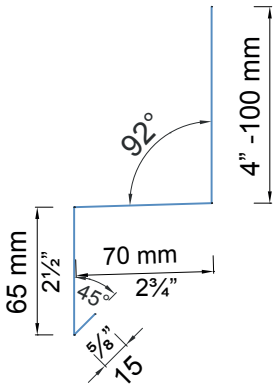
Drip Edge - Goterón

ISO L 33

External Pre-painting - Prepintado Externo

Develop - Desarrollo		Code - Código	Material
10"	250	ISO L 33	Steel gauge 26 & 24 - Acero calibre 26 o 24
inch	mm		

Linear working length 10 ft - Long. de trabajo 3.05 m lineales



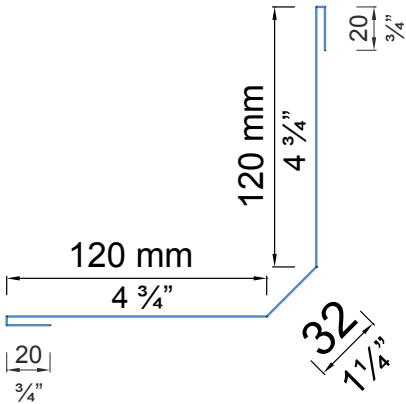
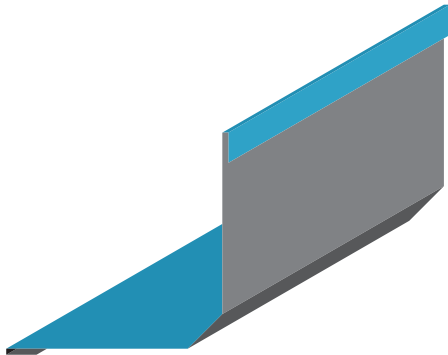
Internal trim cover for bottom wall joint - Moldura tapa interna para junta inferior muro

ISO L 34

External Pre-painting - Prepintado Externo

Develop - Desarrollo		Code - Código	Material
12 1/4"	312	ISO L 34	Steel gauge 26 & 24 - Acero calibre 26 o 24
inch	mm		

Linear working length 10 ft - Long. de trabajo 3.05 m lineales



Trims - Molduras

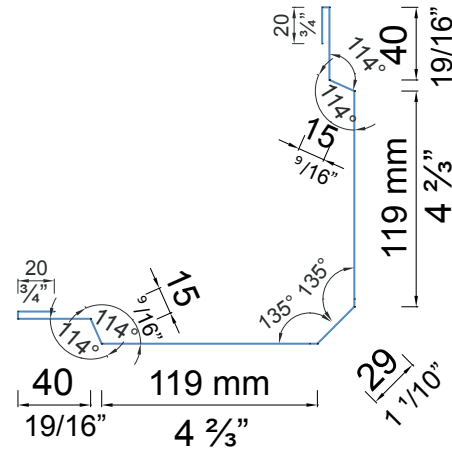
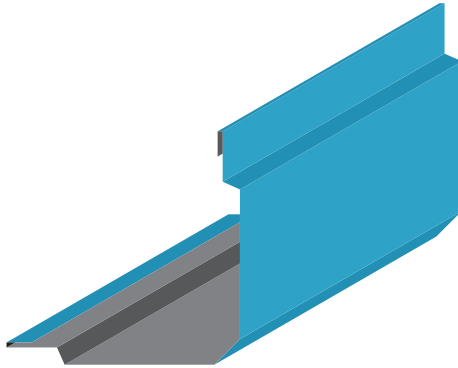
Internal trim cover for bottom wall joint - Moldura tapa interna para junta inferior muro

ISO L 35

External Pre-painting - Prepintado Externo

Develop - Desarrollo		Code - Código	Material
16 1/8"	417	ISO L 35	Steel gauge 26 & 24 - Acero calibre 26 o 24
inch	mm		

Linear working length 10 ft - Long. de trabajo 3.05 m lineales



Gutter for all profiles Panel Thickness ≤ 2" - Canalón para todos los perfiles (espesor de panel ≤ 50mm)

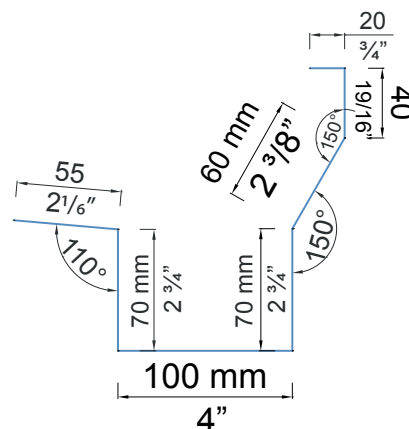
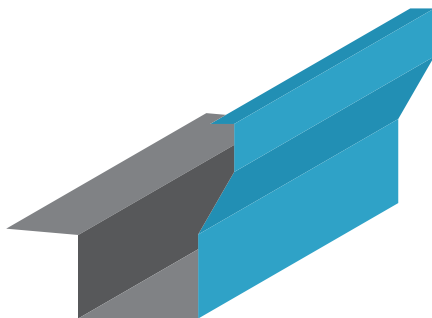
ISO L 37

External Pre-painting - Prepintado Externo

Develop - Desarrollo		Code - Código	Material
16 1/8"	415	ISO L 37	Steel gauge 26 & 24 - Acero calibre 26 o 24
inch	mm		

Linear working length 10 ft - Long. de trabajo 3.05 m lineales

- Linear working length 120" - Long. de trabajo 3.05 m lineales



Trims - Molduras

Canalón para todos los perfiles (espesor de panel ≤50mm) - Gutter for all profiles (panel thickness ≤2")

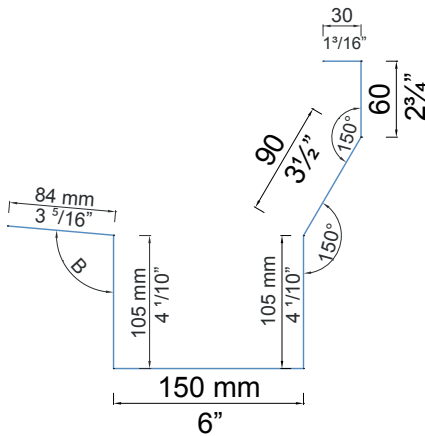
ISO L 38

External Pre-painting - Prepintado Externo

Develop - Desarrollo		Code - Código	Material
24 1/2"	624	ISO L 38	Steel gauge 26 & 24 - Acero calibre 26 o 24
inch	mm		

Linear working length 10 ft - Long. de trabajo 3.05 m lineales

- Linear working length 120" - Long. de trabajo 3.05 m lineales



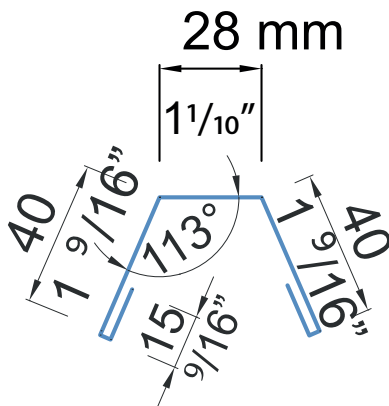
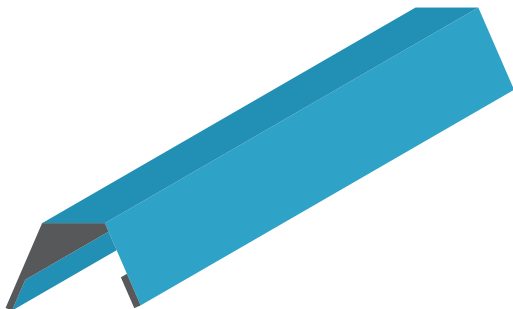
Joint Cap for 1 9/16" - Tapa junta para 40 mm

ISO L 45

External Pre-painting - Prepintado Externo

Develop - Desarrollo		Code - Código	Material
5 7/16"	138	ISO L 45	Steel gauge 26 & 24 - Acero calibre 26 o 24
inch	mm		

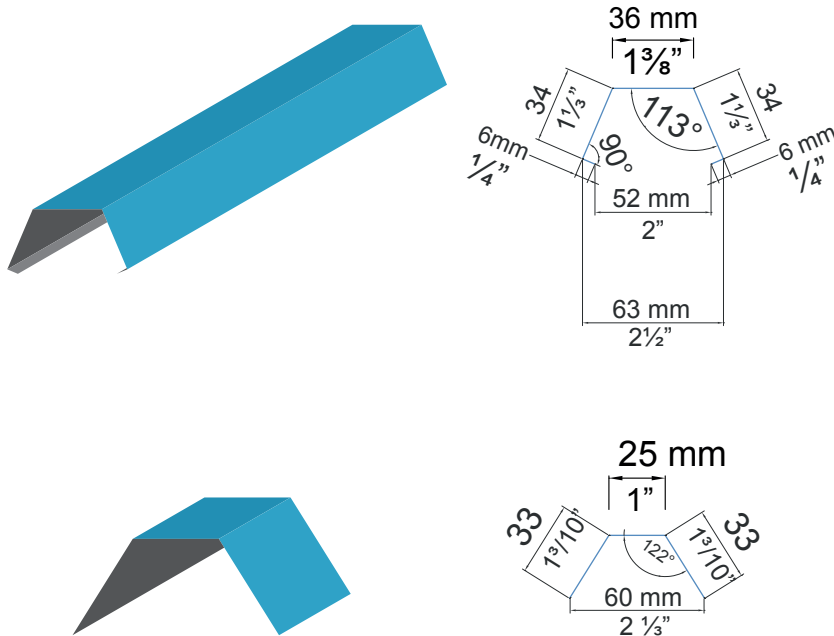
Linear working length 10 ft - Long. de trabajo 3.05 m lineales



Trims - Molduras

Clip-on trim for corrugated roof panel - Tapa junta tipo clip para paneles de techo corrugado

ISO L 46



External Pre-painting - Prepintado Externo

Descripción - Description	Material
Tapajunta tipo Clip / Clip-on trim	Steel gauge 26 & 24 - Acero calibre 26 o 24
Tapajunta tipo Clip / Clip-on trim	Steel gauge 26 & 24 - Acero calibre 26 o 24

Develop - Desarrollo

4 9/16 + 3 5/8"	116 + 91
inch	mm

Tornillo autotaladrante cabeza plana -
Self-drilling screw flat head

Ø X LARGO Ø X LENGHT

6,3 x 110 mm 1/4" x 4 1/3"

6,3 x 120 mm 1/4" x 4 3/4"

6,3 x 130 mm 1/4" x 5 1/8"

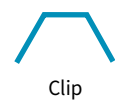
6,3 x 140 mm 1/4" x 5 1/2"

6,3 x 160 mm 1/4" x 6 1/4"

6,3 x 180 mm 1/4" x 7"

6,3 x 200 mm 1/4" x 8"

- Linear working length 120" -
Long. de trabajo 3.05 m lineales



Tapa Junta / Trim

Clip

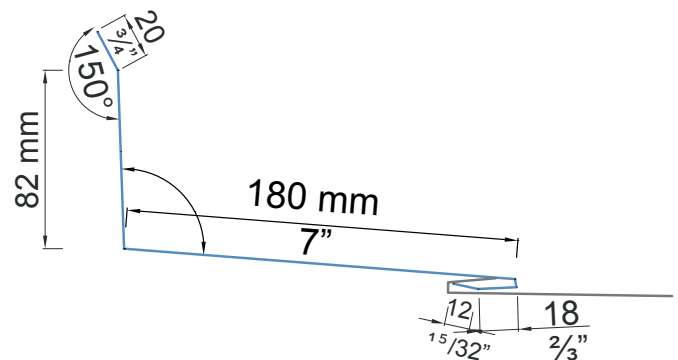
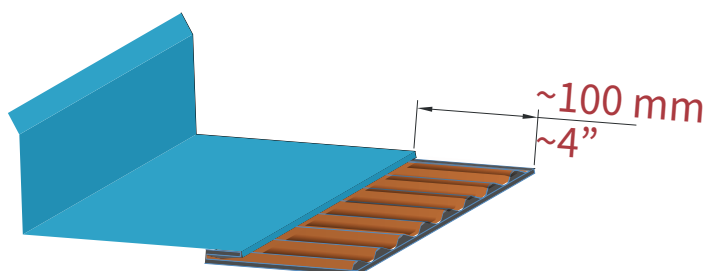
Corner molding for all bottom joints - Moldura adaptable angular para todas las juntas inferiores

ISO L 47

External Pre-painting - Prepintado Externo

Develop - Desarrollo	Code - Código	Material
12 1/4" 312 inch mm	ISO L 47	Steel gauge 26 & 24 - Acero calibre 26 o 24

Linear working length 10 ft - Long. de trabajo 3.05 m lineales



Trims - Molduras

Plane trim for striated isoparete - Junta plana para Isoparete plissé

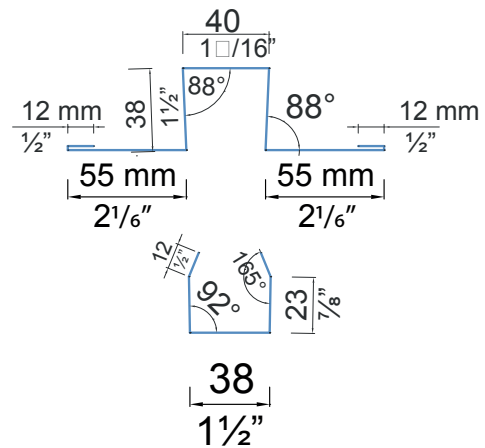
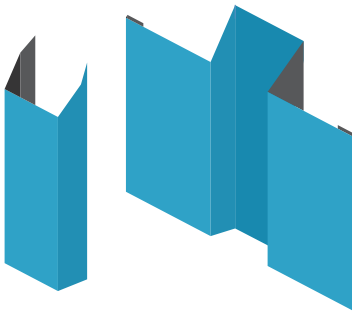
ISO L 52

External Pre-painting - Prepintado Externo

Develop - Desarrollo	
10" + 4¼"	250 + 108
inch	mm

Code - Código	Material
ISO L 52	Steel gauge 26 & 24 - Acero calibre 26 o 24

Linear working length 10 ft - Long. de trabajo 3.05 m lineales



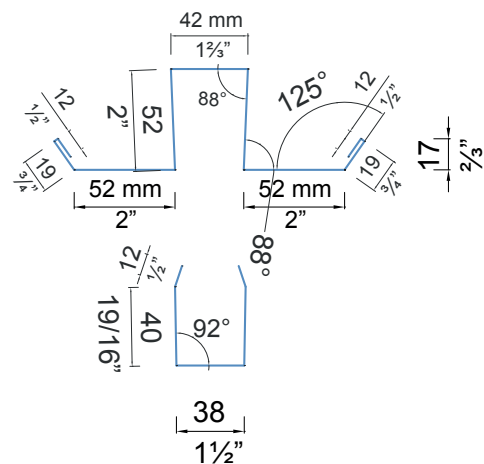
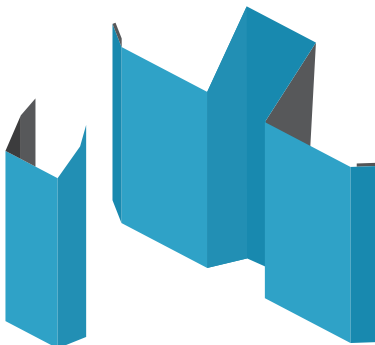
Omega trim and flashing for all isoparete panel - Junta omega y tapajuntas para todos los paneles isoparete

ISO L 53

External Pre-painting - Prepintado Externo

Develop - Desarrollo		Code - Código	Material
12 ½" + 5%	312 + 142	ISO L 53	Steel gauge 26 & 24 - Acero calibre 26 o 24
inch	mm		

Linear working lenght 10 ft - Long. de trabajo 3.05 m lineales



Trims - Molduras

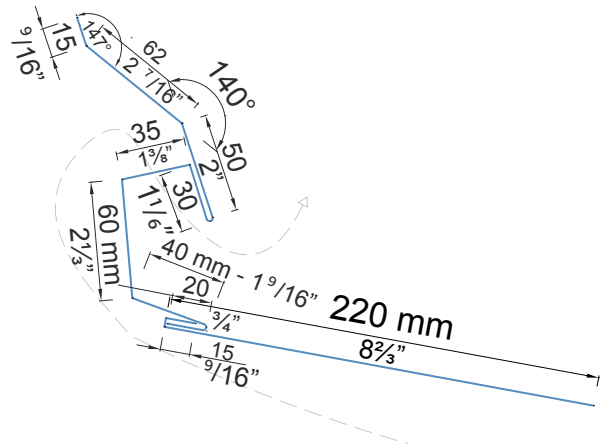
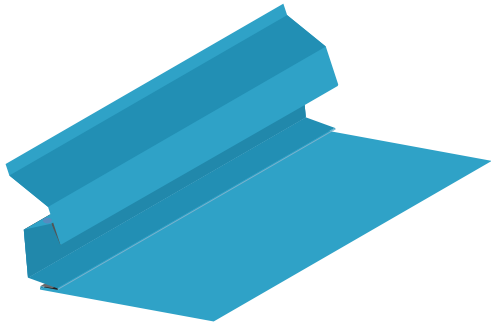
Ventilated ridge cap for roof - Moldura ventilada para juntas inferiores techo / muro
Junta plana para Isoparete plissé - Plane joint for striated Isoparete

ISO L 54

External Pre-painting - Prepintado Externo

Develop - Desarrollo		Code - Código	Material
12 ¼" + 9 ¼"	312 + 235	ISO L 54	Steel gauge 26 & 24 - Acero calibre 26 o 24
inch	mm		

Linear working length 10 ft - Long. de trabajo 3.05 m lineales



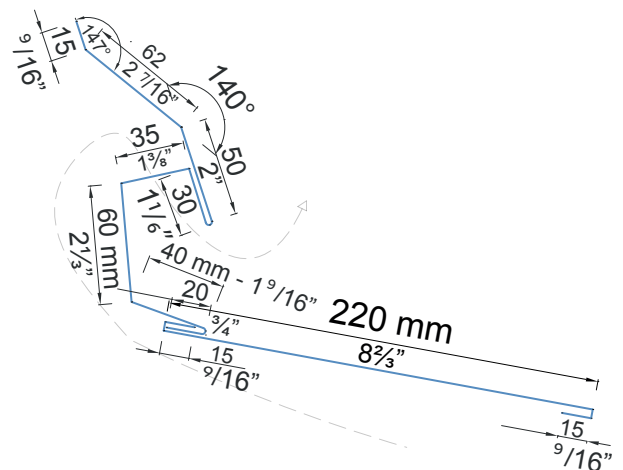
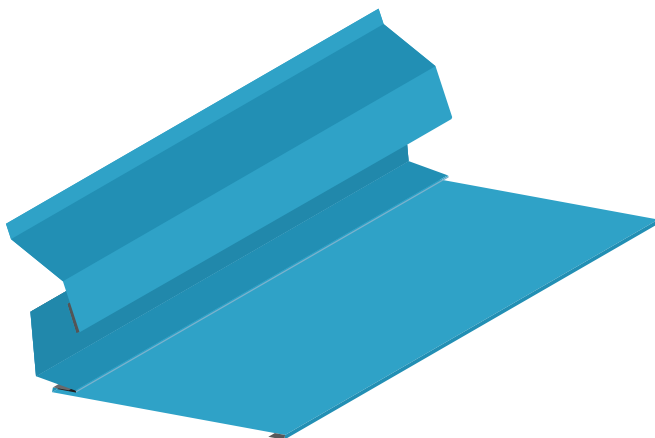
Ventilated ridge cap for roof / wall - Moldura ventilada para juntas inferiores techo / muro

ISO L 54 PIANO

External Pre-painting - Prepintado Externo

Develop - Desarrollo		Code - Código	Material
12 ¼" + 10"	312 + 250	ISO L 54 PIANO	Steel gauge 26 & 24 - Acero calibre 26 o 24
inch	mm		

Linear working length 10 ft - Long. de trabajo 3.05 m lineales





isocindu

Cindu - Isopan J.V.

ISOCINDU MÉXICO

Av. Libre Comercio #137
Puerto Interior Santa Fe III
Silao Gto. C.P. 36275
T. +52 472 800 7241

MANNI GREEN TECH USA

179 Hughes Landing Blvd
Suite 400, The woodlands TX
TX 77398
T. (281) 747-5588

MANNI GREEN TECH USA

77530 Enfield Lane,
Building D, Suite D2,
Palm Desert, California, 92211
T. (281) 747-5588

ISOPAN IBERICA
Terragona | Spain

ISOPAN SPA
Verona | Italy
Frosinone | Italy

ISOPAN EST
Popești-Leordeni | Romania

ISOPAN CZ
Terragona | Spain

ISOPAN FANCE
Mérignac | Spain



www.isocindu.com / atencionaclientes@isocindu.mx